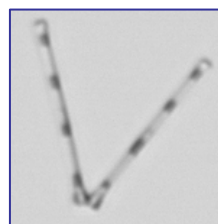
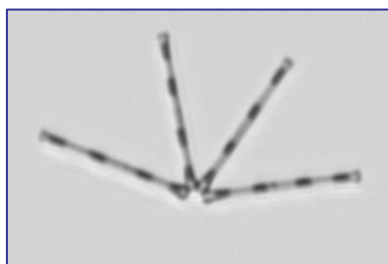
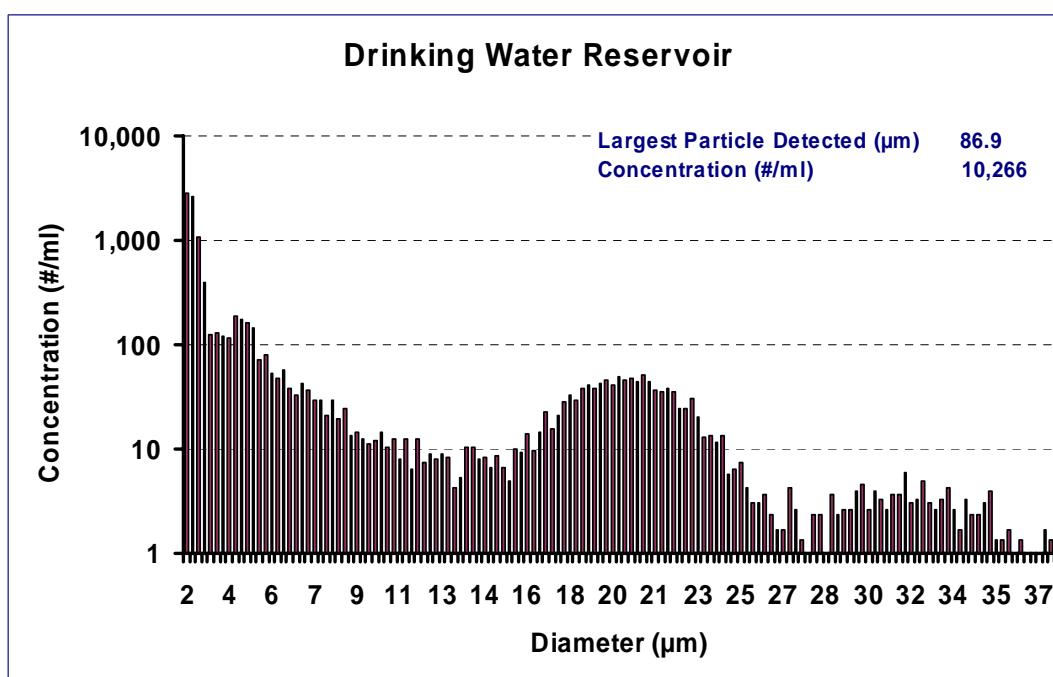


## Detecting Algal Blooms Using MFI

Micro-Flow Imaging (MFI™) was used to analyze raw water from a drinking water reservoir for suspended particle size and concentration. In addition, images of particles larger than 18µm were selectively stored to confirm the presence of a known nuisance algae (*Asterionella*).

Three analysis runs (1ml each) were performed for each sample. Particle size distributions and particle images were obtained. An additional run was performed at high magnification to acquire images.

MFI was used successfully to measure the size and concentration of particles suspended in the reservoir, and to selectively store images based upon specified size ranges (>18µm) to confirm the presence and approximate concentration of *Asterionella*



*Asterionella* Images

**How Does MFI Work?** MFI captures images of suspended particles in a fluid sample. Images are displayed on the system monitor in real-time and are analyzed to produce a particle database including count, size, transparency and shape parameters. Morphology-based software filters can be created and applied to this database to produce particle size distributions and isolate sub-populations. Native images are also stored for further investigation and analysis.